

Windows Mobile® 6.1 Professional

New Features Guide

April 2008

INTELLECTUAL PROPERTY RIGHT INFORMATION

Copyright © 2008 High Tech Computer Corp. All Rights Reserved.

Microsoft, MS-DOS, Windows, Windows NT, Windows Server, Windows Mobile, Windows XP, Windows Vista, ActiveSync, Windows Mobile Device Center, Internet Explorer, Windows Live, MSN, Hotmail, Outlook, Excel, PowerPoint, Word, and Windows Media are either registered trademarks or trademarks of Microsoft Corporation in the United States and/or other countries.

Bluetooth and the Bluetooth logo are trademarks owned by Bluetooth SIG, Inc.

Wi-Fi is a registered trademark of the Wireless Fidelity Alliance, Inc.

All other company, product and service names mentioned herein are trademarks, registered trademarks or service marks of their respective owners.

HTC shall not be liable for technical or editorial errors or omissions contained herein, nor for incidental or consequential damages resulting from furnishing this material. The information is provided "as is" without warranty of any kind and is subject to change without notice. HTC also reserves the right to revise the content of this document at any time without prior notice.

No part of this document may be reproduced or transmitted in any form or by any means, electronic or mechanical, including photocopying, recording or storing in a retrieval system, or translated into any language in any form without prior written permission of HTC.

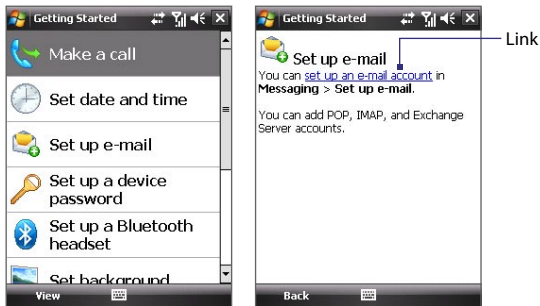
Table of Contents

1. Introduction	4
2. Getting Started Application	4
3. Messaging	5
Auto-complete	5
Direct Push.....	5
Fetch Mail for POP3/IMAP4 e-mail accounts.....	5
Threaded SMS.....	6
Custom domain e-mail	7
Set up a POP3/IMAP4 e-mail account.....	8
Set up an Exchange Server connection	8
4. Internet Explorer® Mobile	9
Zoom Level.....	9
Navigate the whole Web page	9
5. Bluetooth	10
Connect to a Bluetooth headset.....	10
Bluetooth Phone Address Profile	10
6. Wi-Fi.....	11
7. System Center Mobile Device Manager	11
Device Enrollment	11
Managed Programs	12
8. Other Improved Features	12

1. Introduction

The Windows Mobile® 6.1 Professional New Features Guide will help you familiarize yourself with the new features that come with Windows Mobile® 6.1 Professional. Windows Mobile® 6.1 Professional is the latest upgrade for Windows Mobile and it gives you improved usability, messaging and connections features.

2. Getting Started Application



The Getting Started application is a list of “how to’s” that you can reference to learn basic features and settings of your device. Tap one of the items onscreen to learn how to do the task.

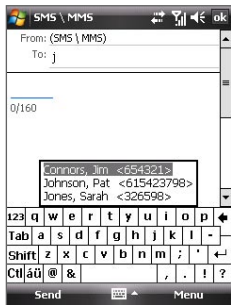
Tip Most of the tutorials contain the link to the actual screen you need to access to perform the task. Tap the link to go to the screen.

3. Messaging

Windows Mobile 6.1 comes with a host of new and enhanced features for your messaging needs.

Auto-complete

Messaging now comes with an auto-complete feature for message recipients. Simply enter the first letter of the contact's first or last name or e-mail address and Messaging will show a box with a list of possible contacts or e-mail addresses to choose from. Tap the contact name or e-mail address to enter it in the **To** field.



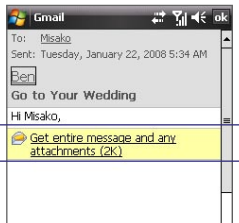
Direct Push

Direct Push version 2 is redesigned to give you better bandwidth and battery performance. Direct Push version 2 reduces bandwidth usage by up to **60%** and improves battery life by an average of **33%**.

Note Microsoft Exchange Server 2007 SP1 is required.

Fetch Mail for POP3/IMAP4 e-mail accounts

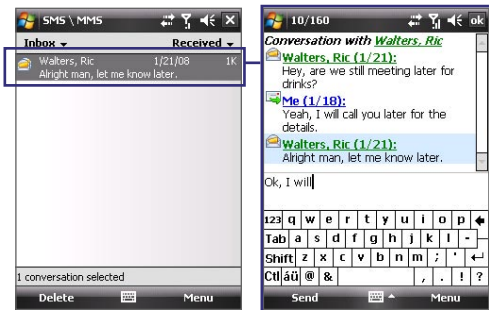
The Fetch Mail feature is now also available for POP3/IMAP4 e-mail accounts. The Fetch Mail feature downloads an entire e-mail immediately without the need for you to perform a full Send/Receive action. This limits the download to just the e-mail message that you want and helps save data cost.



Threaded SMS

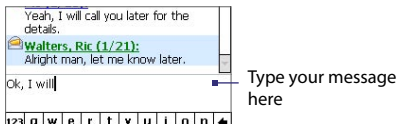
Threaded SMS lets you see exchanged messages (similar to a chat program) with a contact on the screen.

Note A single thread per contact (or number) is maintained in the SMS \ MMS inbox.



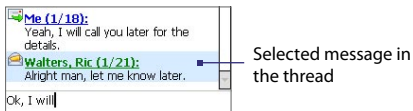
To respond to a message

1. In the SMS \ MMS inbox, tap the message to open it.
2. At the bottom of the screen, type your message and then tap **Send**.



To copy a message in the thread to the SIM card

1. In the SMS \ MMS inbox, tap the message to open it.
2. Press NAVIGATION up or down to select the message in the thread you want to copy to the SIM card.



Note You cannot copy an outgoing message to the SIM card.

3. Tap **Menu > Copy to SIM**.

To delete a message in the thread

1. In the SMS \ MMS inbox, tap the message to open it.
2. Select the message in the thread you want to delete.
3. Tap **Menu > Delete**.

To reply to a text message with an MMS message

You can reply to a text message in a thread or to a SIM text message using an MMS message.

1. In the SMS \ MMS inbox, tap a message thread to open it.
2. Tap **Menu > Insert**, and then in the menu, select the item you want to insert: **Picture/Video, Audio** or **Attachment**.
3. Tap **Send**.

Tips

- You can also insert a vCard or vCalendar in your MMS message.
- To compose an MMS message complete with text, emoticons, media and attachments, tap **Menu > Advanced Composer**.

Custom domain e-mail

Easily set up custom e-mail domains in Windows Mobile 6.1. When you are using an e-mail domain name but hosted by a different e-mail provider (For example, the e-mail account benjamin@startup.com is hosted by email.com), choose the **Custom Domain** option in the E-mail Setup wizard to manually set up the e-mail account.



Set up a POP3/IMAP4 e-mail account

Setting up a POP3/IMAP 4 e-mail account has been made faster and easier.

1. Tap **Start > Messaging > Setup E-mail**.
2. Enter the **E-mail address** and **Password** for the e-mail account and select the **Save password** option. Tap **Next**.
3. Tap **Next**.

Note E-mail Setup searches your device for preloaded e-mail configuration settings. If the device cannot find the server settings for the specified e-mail account, your device needs to connect to the Internet and try to download the settings. If it cannot find the settings online, you need to enter the settings manually.

4. Enter **Your name** and the **Account display name** and then tap **Next**.
5. In the **Automatic Send/Receive** list, choose how frequent you want e-mail messages to be automatically sent and downloaded on your device. Tap **Finish**.

Set up an Exchange Server connection

Setting up an Exchange Server connection has been refined to make it faster for you to connect to the Exchange Server.

1. Tap **Start > Messaging > Setup E-mail**.
2. Enter the **E-mail address** and **Password** for the e-mail account and select the **Save password** option. Tap **Next**.
3. Clear the **Try to get e-mail settings automatically from the Internet** option and tap **Next**.
4. In **Your e-mail provider**, select **Exchange server** and tap **Next**.
5. Tap **Next** again.
6. Select the **Attempt to detect Exchange Server Settings automatically** option and tap **Next**.
7. Enter the **Domain** name and tap **Next**.
8. In **Server address**, enter the Exchange Server address and tap **Next**.
9. Select the items that you want to sync with the Exchange Server and tap **Finish**.

4. Internet Explorer® Mobile

Viewing Web pages is made easier with the enhanced browsing features of Internet Explorer Mobile.

Zoom Level

Zoom Level has replaced Text Size in the View menu.

To change the zoom level, on a Web page, tap **Menu > View > Zoom Level** and then select a zoom level from the menu.



Navigate the whole Web page

Navigating large-sized Web pages is easy by using the Page Overview feature.

1. Go to the Web page that you want to view.
2. Select **Menu > Zoom Out**.
3. Use the NAVIGATION CONTROL of your device to move the box to the area of the Web page you want to view.
4. Tap **Zoom In** or press ENTER to view the selected area using the **Default** zoom level.



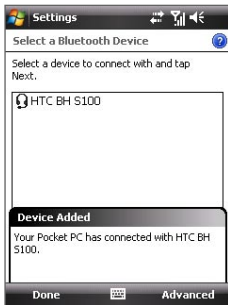
5. Bluetooth

Windows Mobile 6.1 enhances Bluetooth® functionality in your device.

Connect to a Bluetooth headset

Pairing your Bluetooth headset with your device is now simpler.

1. Make sure that both your device and the Bluetooth headset are turned on and within close range, and that the headset is visible.
2. Tap **Start** > **Settings** > **Connections** tab.
3. Tap **Bluetooth** > **Devices** tab > **Add new device**.
4. Tap the name of the Bluetooth headset, then tap **Next**. The device will automatically pair the device with the Bluetooth headset.



Windows Mobile will automatically try one of the preconfigured passcodes (0000, 1111, 8888, 1234) to pair the Bluetooth headset with the device. If this fails, you have to enter the passcode delivered with your headset manually.

Bluetooth Phone Address Profile

Windows Mobile 6.1 supports the Phone Book Access Profile (PBAP) for Bluetooth that allows for the transfer of phone book information between Bluetooth devices. This will let Bluetooth-enabled car kits access specific phone book information from a Windows Mobile 6.1 device.

6. Wi-Fi

Connecting to an open Wi-Fi® network is fast and easy. Simply tapping the network name on the pop-up message connects you to the open network. You no longer need to set additional options to connect to an open network.

To quickly connect to an open network

1. Tap **Start > Programs > Comm Manager**.
2. In Comm Manager, tap the **Wi-fi** icon.
3. On the pop-up message, select the open network (unsecured) you want to connect to and then tap **OK**.

7. System Center Mobile Device Manager

Windows Mobile 6.1 supports System Center Mobile Device Manager. System Center Mobile Device Manager is a server-side solution that provides a more secure and efficient management of Windows Mobile-powered devices.

Note The device needs to be connected using a data connection for the System Center Mobile Device Manager to manage the Windows Mobile device.

Device Enrollment

Enrolling your device in your company's domain enables the System Center Mobile Device Manager to manage the device. This lets the System Center Mobile Device Manager administrator securely install software, disable features, provide device updates, and more. To enroll, tap **Start > Settings > Connections** tab > **Domain Enroll**.

Note Please ask your system administrator for more details about enrolling your device the System Center Mobile Device Manager.

Managed Programs

Managed Programs lets you download and install applications that are deployed by the System Center Mobile Device Manager. Managed Programs also lets you view programs that were installed from the System Center Mobile Device Manager. To access Managed Programs, tap **Start > Settings > System** tab > **Managed Programs**.

Note Please ask your system administrator for more details about Managed Programs.

8. Other Improved Features

Windows Mobile 6.1 also come with a host of other features that make your device the ultimate mobile companion. Other improved features include:

- Improved performance when you are streaming media over Real Time Streaming Protocol (RTSP).
- Improved call status notifications when dialing emergency numbers on the Personal Identification Number (PIN) screen.
- Improved Wi-Fi, Bluetooth, and cellular technologies performance.
- Windows Media Player, when playing back media, automatically skips expired content (i.e. content protected with Digital Rights Management (DRM)) and goes to the next valid media that can be played back.